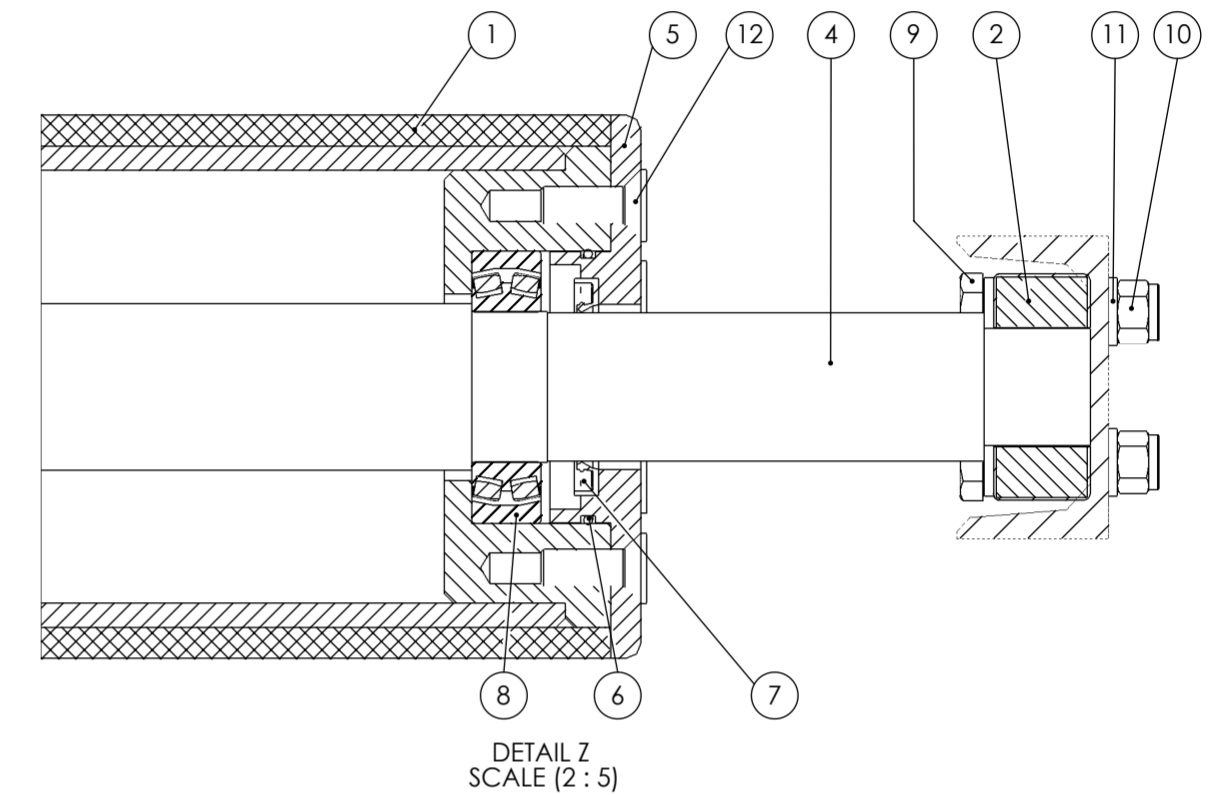
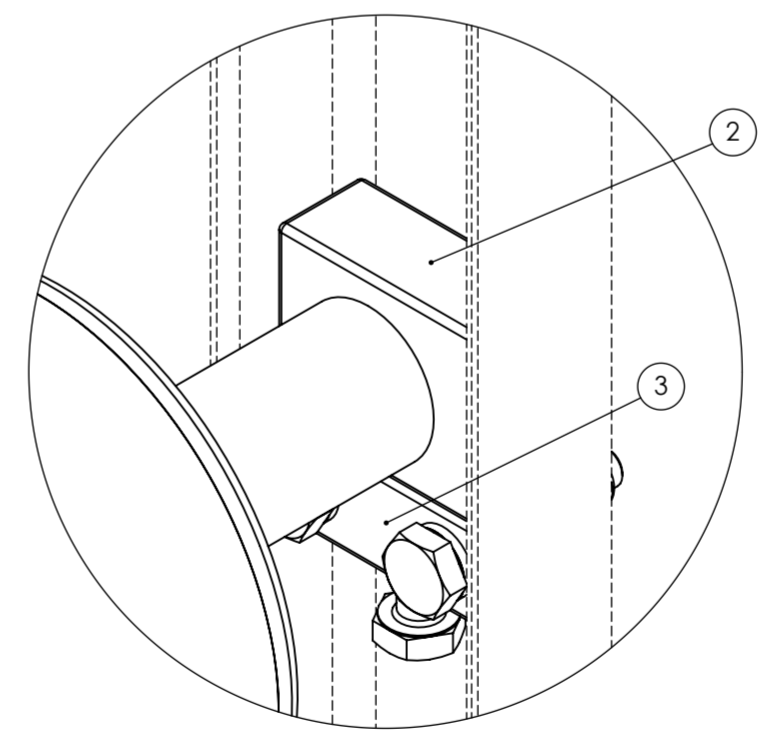
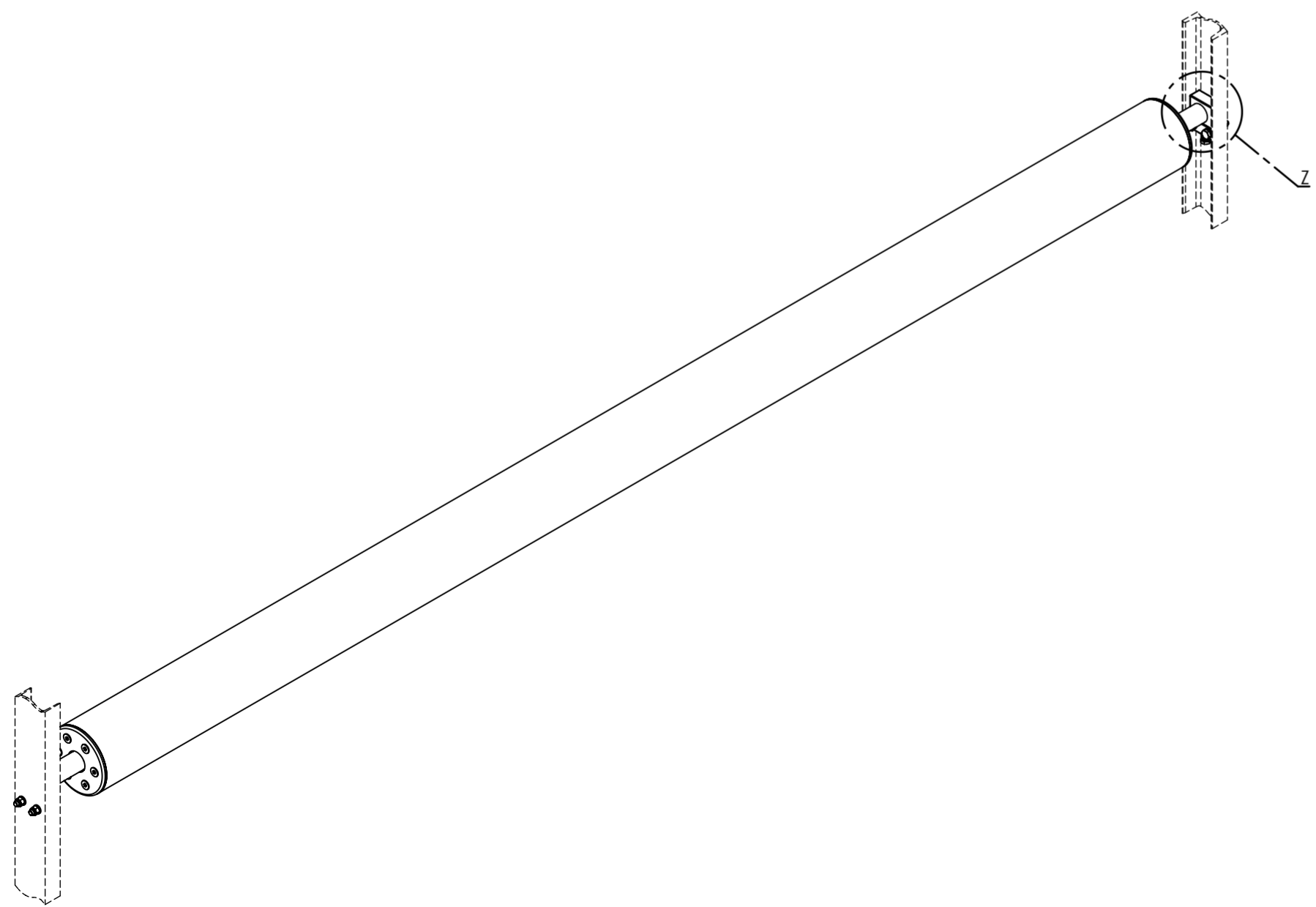


SECTION AZ-AZ



DETAIL Z
SCALE (2 : 5)



DETAIL Z
SCALE (1 : 2)

12	SOCKET CSINK HEAD CAP SCREW	12	DIN 7046-M12x35	ST	****
11	WASHER	8	ISO 7090-12-20HV	ST	****
10	NUT	4	DIN 982-M12-A2-50	ST	****
9	SCREW	6	ISO 4017-M12x65-A4-50	ST	****
8	BEARING	2	SKF 2221 OCA-W33	ST	****
7	SEAL	2	DIN 3760-A50x72x8	ST	****
6	O-RING	2	DIN 3771-82.5x3.55	ST	****
5	FLANGE	2	Ø180x25	****	****	SISCO.PR.94-C 0007-07-04
4	SHAFT	1	Ø55x3915	****	****	SISCO.PR.94-C 0007-07-03
3	SUB 03	2	32x32x75	****	****	SISCO.PR.94-C 0007-07-02
2	SUB 02	2	32x62x75	****	****	SISCO.PR.94-C 0007-07-01
1	SUB 01	1	****	****	****	SISCO.PR.94-C 0007-07-01-00

According DIN 4766

Tolerances According
DIN ISO 2768-1 (m)
DIN ISO 2768-2 (k)

Scale: 1:5	Size: A2
Drawn	94/02/31 A.RAZAVI
Checker	94/03/03 A.NAJARAN
Approved	94/03/20 A.JAMSHIDIAN
Finald	94/ /

SIRJAN IRANIAN STEEL COMPANY

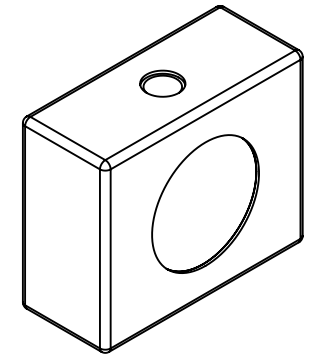
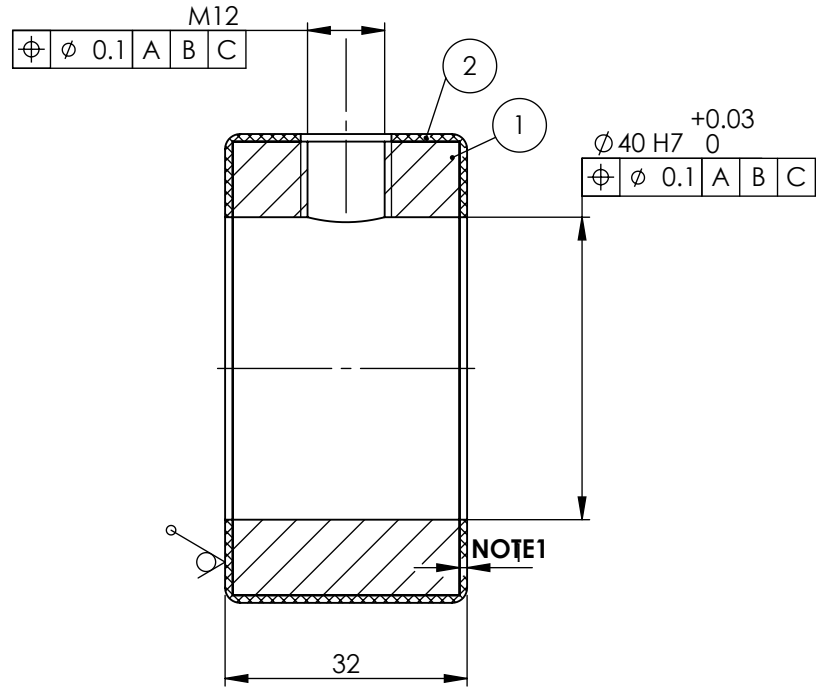
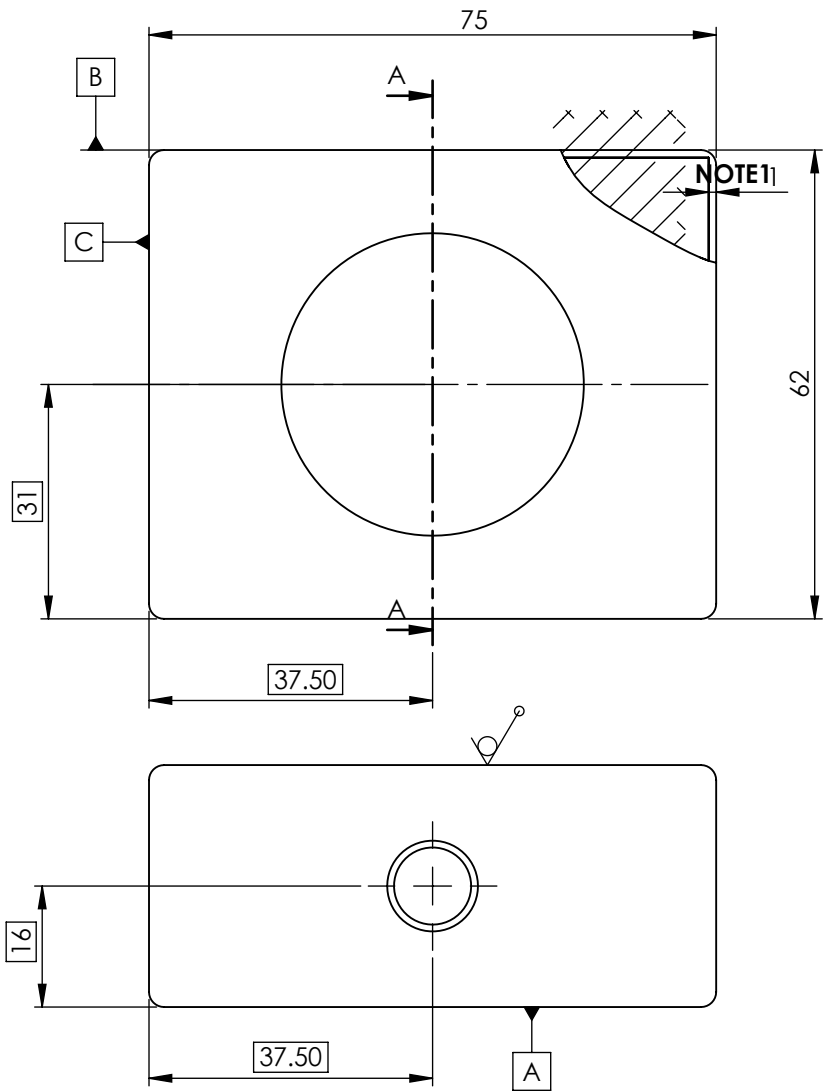
PART RETECH
CONTRACTOR:
PART RETECH

Title: DRUM TENSION

Total Weight: ****

REV No.	Revision Note	By	Date

ANG.PROJ DWG No.: SISCO.PR.94-C 0007-07-00 Ref.DWG.No.:
Item No.: Sheet: 1 of 6 REV. 0



SECTION A-A

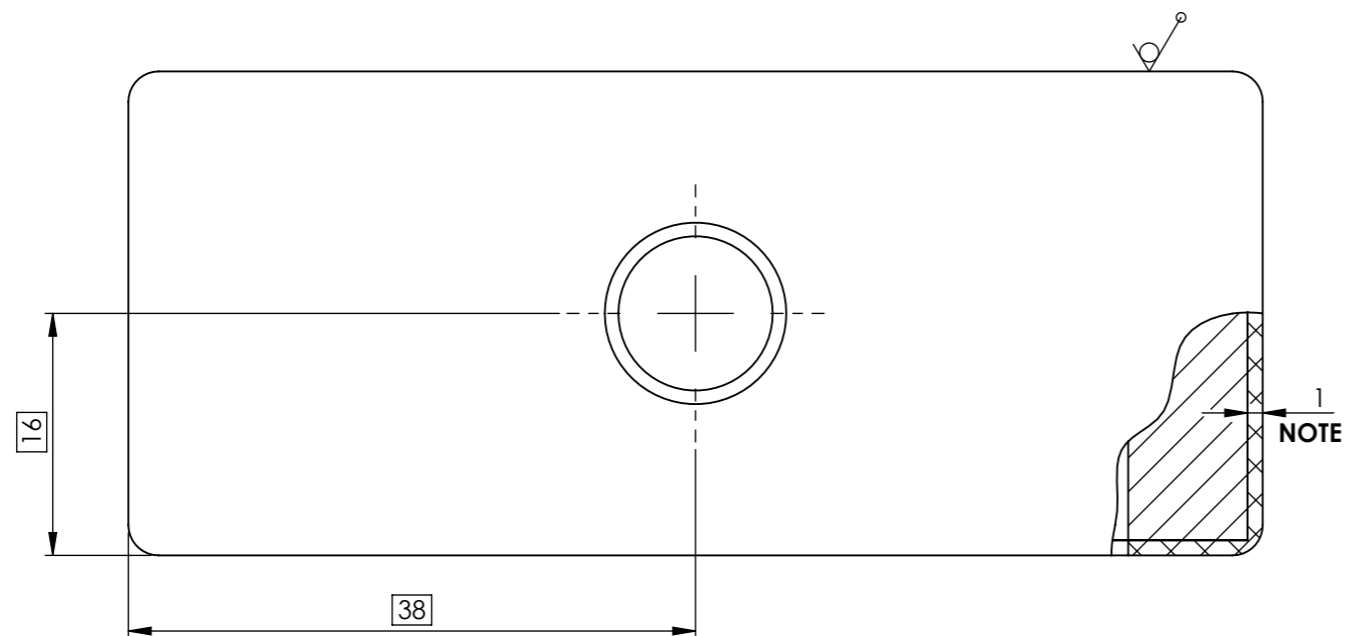
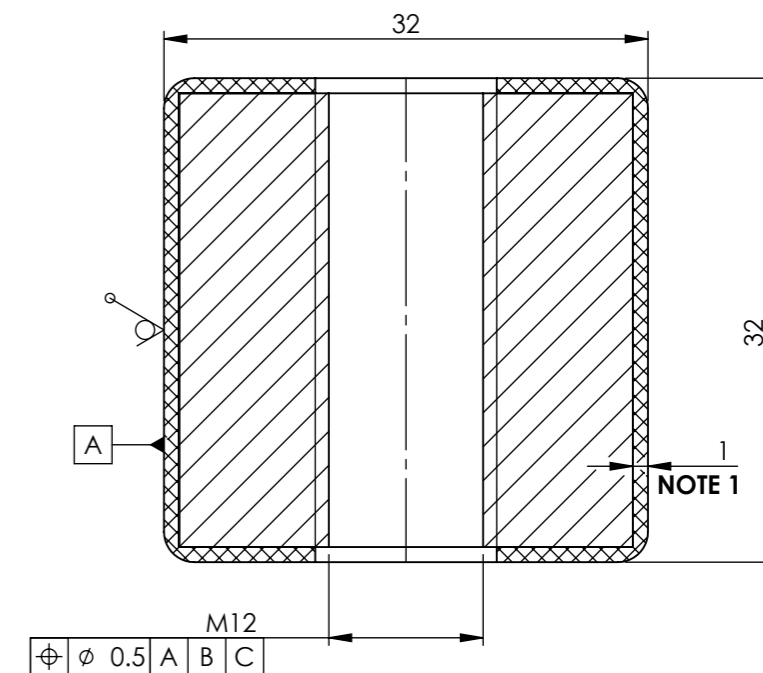
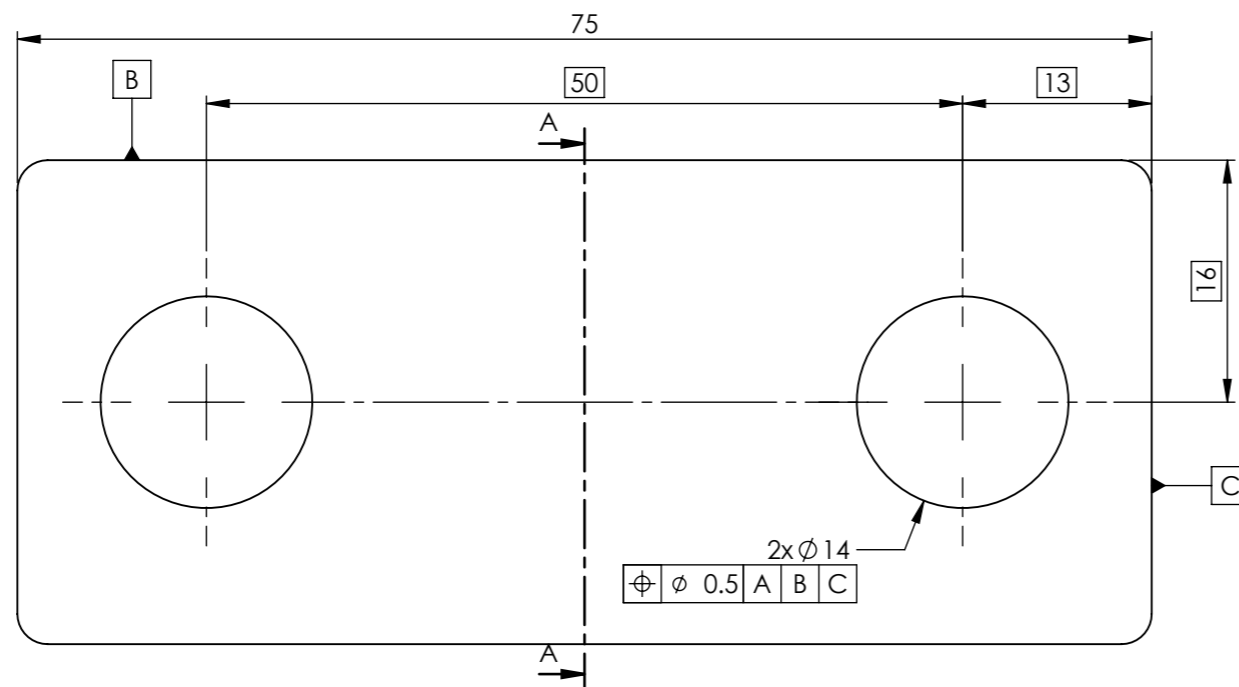
NOTE1: THIS SURFACES MUST BE COATED BY HARD RUBBER LINED 1mm

2	RUBBER	****	****	****	****	****
1	PLAET 01	1	30x60x73	****	****	****
No.	Part Name	QTY.	Technical Data	Mat.	Weight	Remark

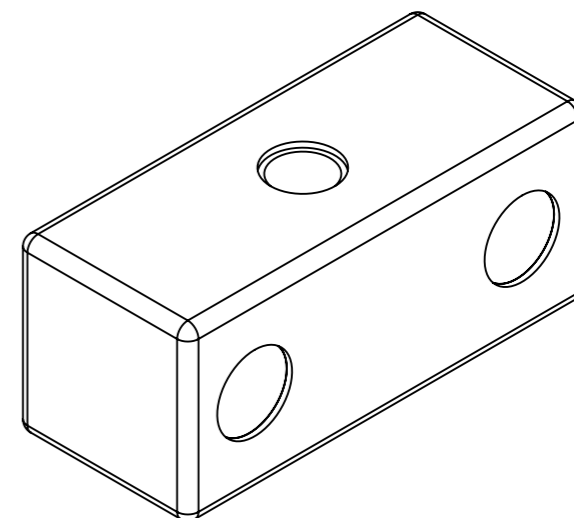
According DIN 4766
3.2/ (✓)

Tolerances According
DIN ISO 2768-1 (m)
DIN ISO 2768-2 (K)

Scale: 1:1	Size: A4	 Client: SIRJAN IRANIAN STEEL COMPANY	 CONTRACTOR: PART RETECH				
Drawn	Date: 94/03/03			Name: A.RAZAVI			
Checker	Date: 94/03/04	Name: A.NAJARAN	Title: SUB 02 Total Weight: ****				
Approved	Date: 94/03/20	Name: A.JAMSHIDIAN					
Finald	Date: 94/ /	Document Type: SUB	Ref.DWG.No.:				
REV No.	Revision Note	By	Date	ANG.PROJ	 DWG No.: SISCO.PR.94-C 0007-07-01 Item No.:	Sheet: 2 of 6	REV. 0



SECTION A-A



NOTE1: THIS SURFACES MUST BE COATED BY HARD RUBBER LINED 1mm

2	RUBEER	****	****	****	****	****
1	PLAET 02	1	30x30x73	****	****	****
No.	Part Name	QTY.	Technical Data	Mat.	Weight	Remark

According DIN 4766
3.2 / (V)

Tolerances According
DIN ISO 2768-1 (m)
DIN ISO 2768-2 (K)

Scale: 2:1 Size: A3

Drawn	94/03/03	A.RAZAVI
Checker	94/03/04	A.NAJARAN
Approved	94/03/20	A.JAMSHIDIAN
Finald	94/ /	94/ /

SIRJAN IRANIAN STEEL COMPANY

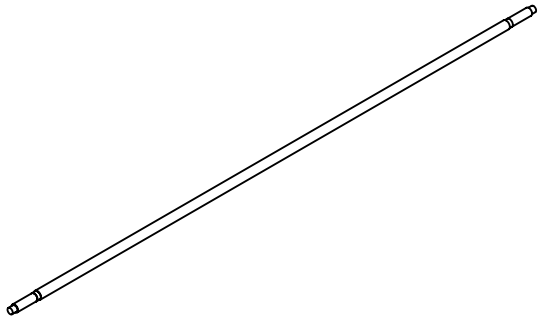
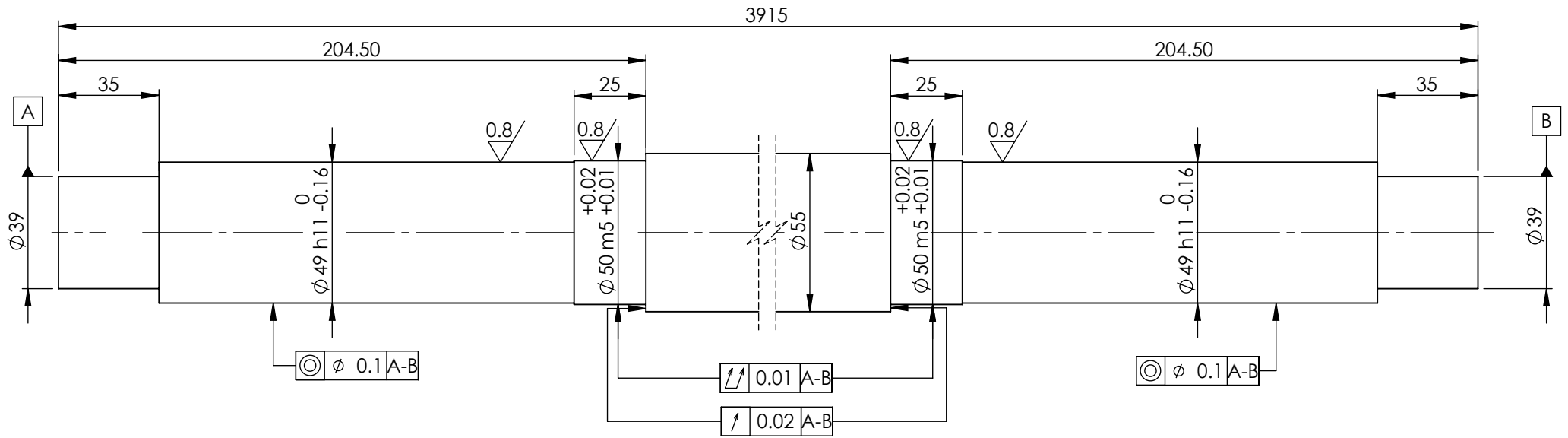
Client: Sirjan Iranian Steel CO.

CONTRACTOR: PART RETECH

Title: SUB 03

Document Type: SUB Ref.DWG.No.:

REV No.	Revision Note	By	Date	ANG.PROJ	DWG No.: SISCO.PR.94-C 0007-07-02	Item No.:	Sheet: 3 of 6	REV. 0
---------	---------------	----	------	----------	-----------------------------------	-----------	---------------	--------

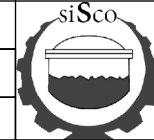


NOTE1: ALL SHARP EDGES MUST BE REMOVED.

According DIN 4766
 $\frac{3.2}{\nabla}$ / $\frac{0.8}{\nabla}$

Tolerances According
 DIN ISO 2768-1 (m)
 DIN ISO 2768-2 (K)

Scale: 1:2		Size: A4	
QTY.:	Date	Name	
Drawn	94/03/03	A.RAZAVI	
Checker	94/03/04	A.NAJARAN	
Approved	94/03/20	A.Jamshidian	
Finald	94/ /		



IRANIAN SIRJAN STEEL COMPANY
 BARDSIR STEEL COMPANY



CONTRACTOR:
 PART RETECH

Title:
 SHAFT

Weight: ****
Mat: ****

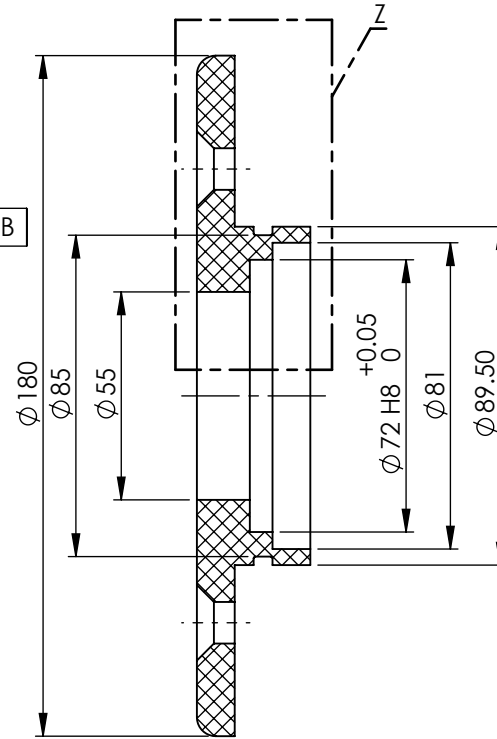
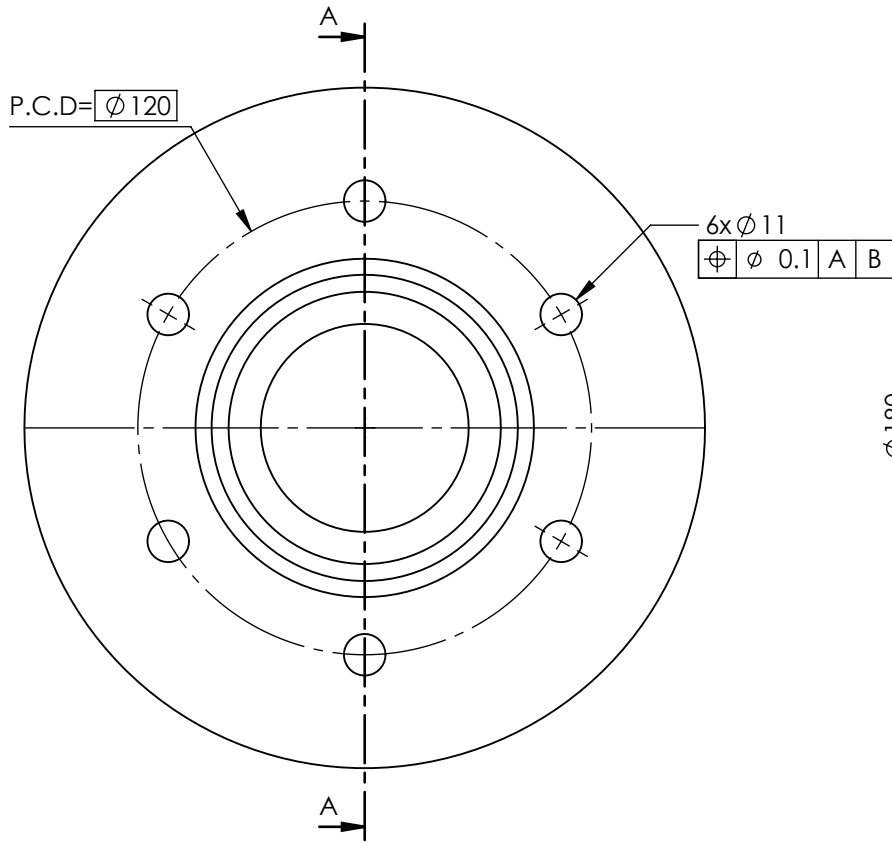
Document Type: Part Ref.DWG.No.:

REV No.	Revision Note	By	Date

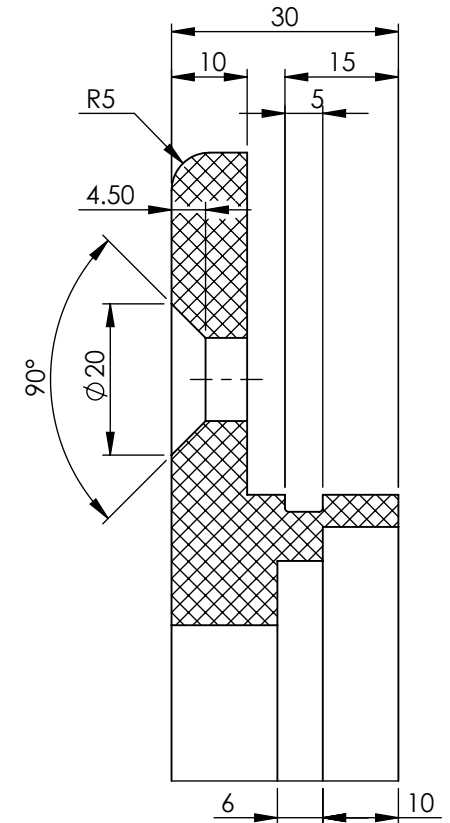
ANG.PROJ

DWG No.: SISCO.PR.94-C 0007-07-03
 Item No.:

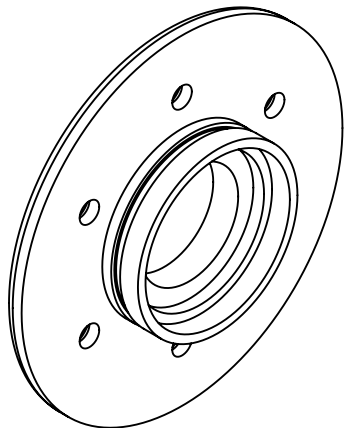
Sheet: 4 of 6 REV. **0**



SECTION A-A



DETAIL Z
SCALE (1 : 1)

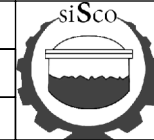


NOTE 1: REMOVE ALL SHARP EDGES.

According DIN 4766
3.2

Tolerances According
DIN ISO 2768-1 (m)
DIN ISO 2768-2 (K)

Scale: 1:2 Size: A4



IRANIAN SIRJAN STEEL
COMPANY
BARDSIR STEEL COMPANY



QTY.:	Date	Name
Drawn	94/03/03	A.RAZAVI
Checker	94/03/04	A.NAJARAN
Approved	94/03/20	A.JAMSHIDIAN
Finald	94/ /	

Title:

FLANGE

Weight: ****

Mat: ****

Document Type: Part

Ref.DWG.No.:

REV No.	Revision Note	By	Date

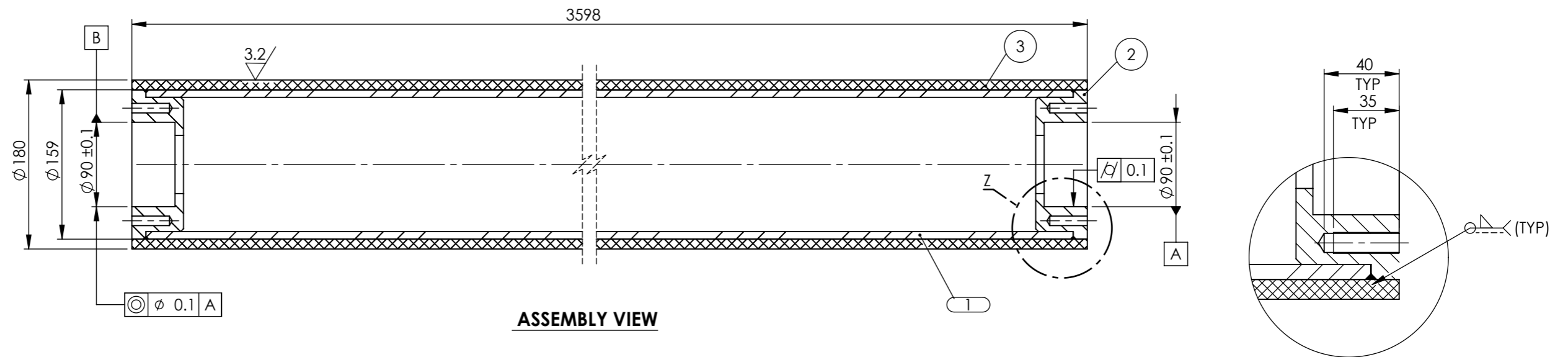
ANG.PROJ

DWG No.: SISCO.PR.94-C 0007-07-04

Sheet: 5 of 6

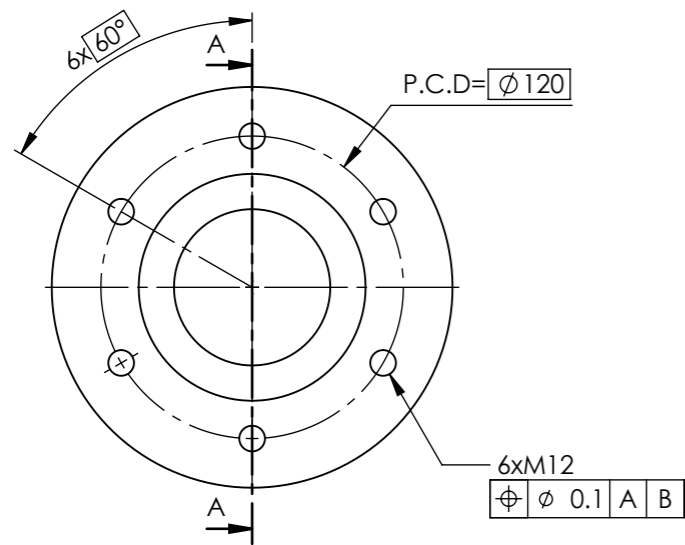
REV. 0

Item No.:

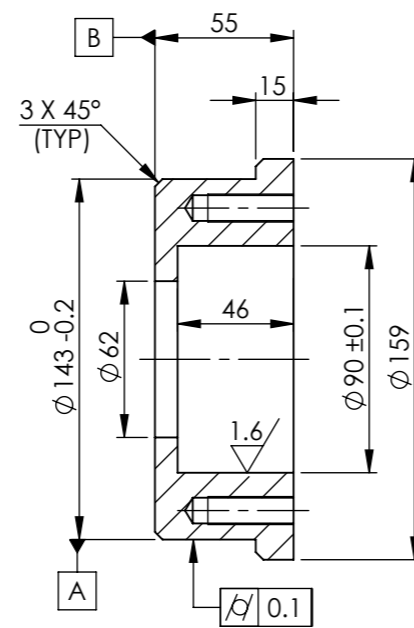


ASSEMBLY VIEW

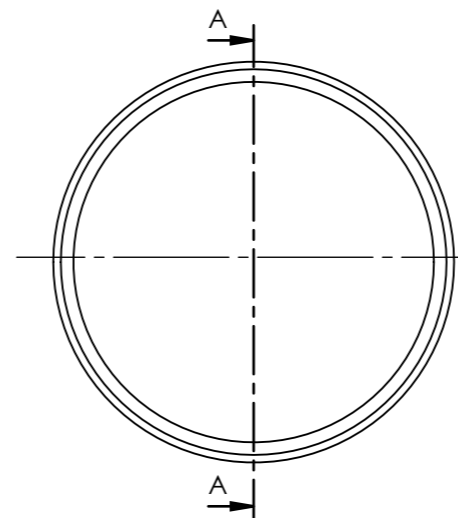
DETAIL Z
SCALE (2 : 5)



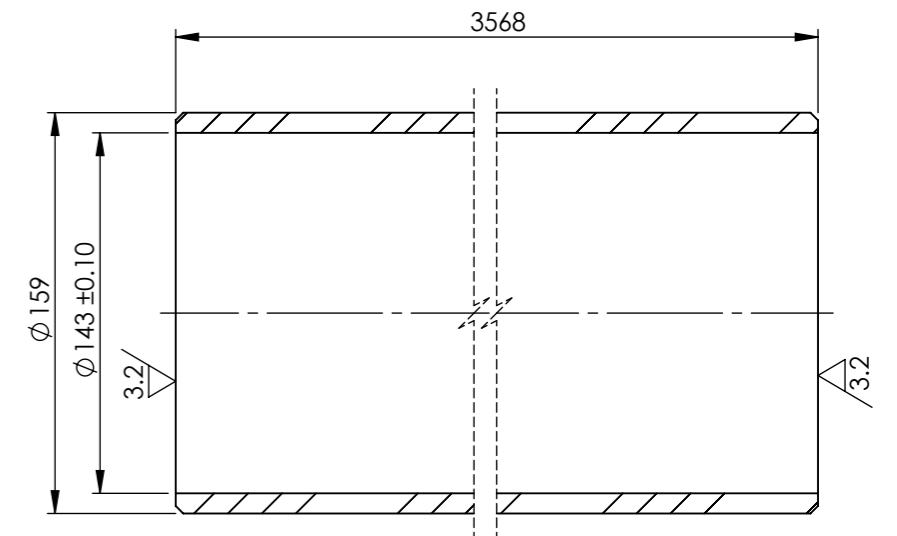
PART 2
SCALE (1 : 3)



SECTION A-A
SCALE (1 : 3)



PART 1
SCALE (1 : 3)



SECTION A-A
SCALE (1 : 3)

NOTE 1: NOT INDICATED WELDS WILL BE CONTINUOUS
- 0/7 OF MIN. THICKNESS TO JOINT IF SINGLE FILLET
- 0/4 OF MIN. DOUBLE FILLET

No.	Part Name	QTY.	Technical Data	Mat.	Weight	Remark
3	RUBBER	1	****	****	****	****
2	CAPE	2	Ø159x55	****	****	****
1	PIPE 6"	1	DIN 2448Ø189x8	****	****	****

According to DIN 4766
Tolerances According to DIN ISO 2768-1 (m) and DIN ISO 2768-2 (K)

Scale: 1:5	Size: A3	 SIRJAN IRANIAN STEEL COMPANY CONTRACTOR: PART RETECH
Drawn	Date: 94/03/03, Name: A.RAZAVI	
Checker	Date: 94/03/04, Name: A.NAJARAN	
Approved	Date: 94/03/20, Name: A.JAMSHIDIAN	
Finished	Date: 94/ / , Name: 94/ /	Title: SUB 01 Document Type: SUB Ref.DWG.No.:

REV No.	Revision Note	By	Date	ANG.PROJ	DWG No.: SISCO.PR.94-C 0007-07-01-00	Item No.:	Sheet: 6 of 6	REV. 0

